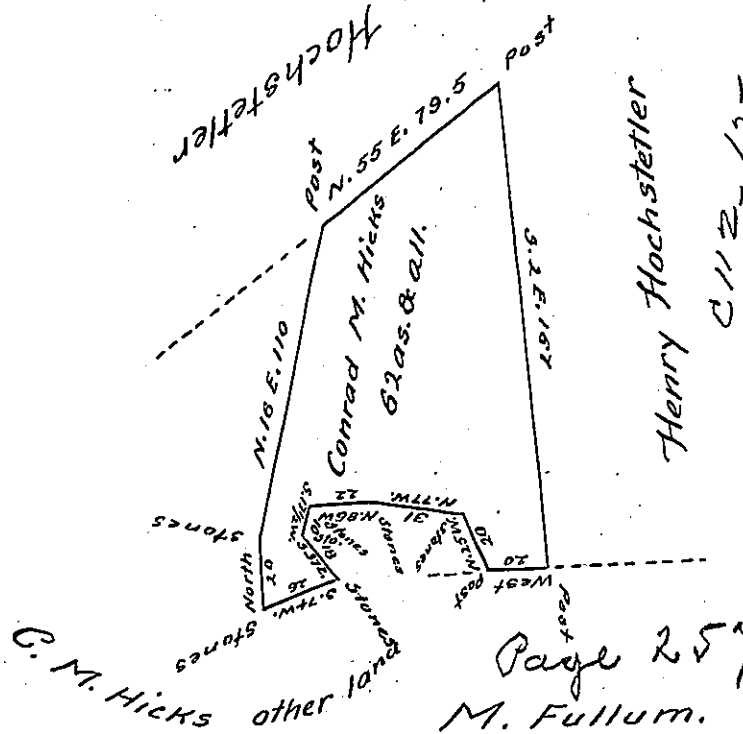


C 81 - 186

Henry Hochstetler



Page 254
M. Fullum.

Situate on the head waters of Cranberry Run, in Elk Lick townsh-
 ip Somerset county containing sixty two acres and allowance and
 surveyed by S. M. Haller in persuance of Warrant granted to Con-
 rad M. Hicks bearing date November 29th, 1853.

Certified this 9th. day of February 1854.

Per Martin Meyer,

Dep Surveyor.

To J. Porter Brawley Esq.

Surveyor General.

IN TESTIMONY that the above is a copy of the original remaining on file in
 the Department of Internal Affairs of Pennsylvania, made
 conformably to an Act of Assembly approved the 16th day of
 February, 1833, I have hereunto set my Hand and caused
 the Seal of said Department to be affixed at Harrisburg,
 this Seventeenth day of April 1905.

[Signature]
 Secretary of Internal Affairs.